

# MONTHLY MEMBERSHIP PROGRESS REPORT

LOCATION ARKANSAS

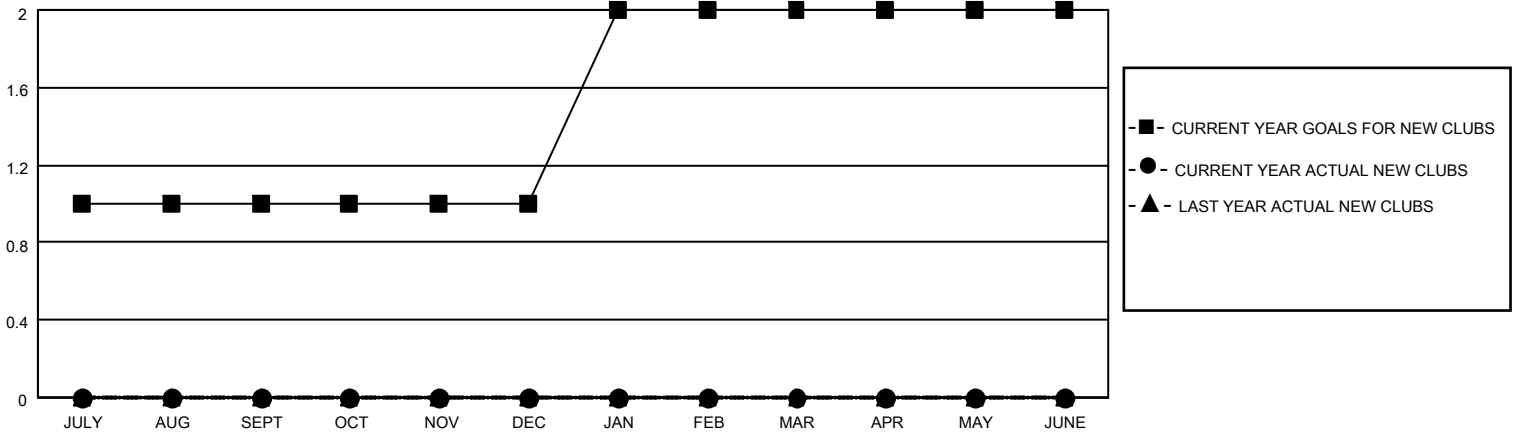
District 7 O

Results as of: 3/31/2023

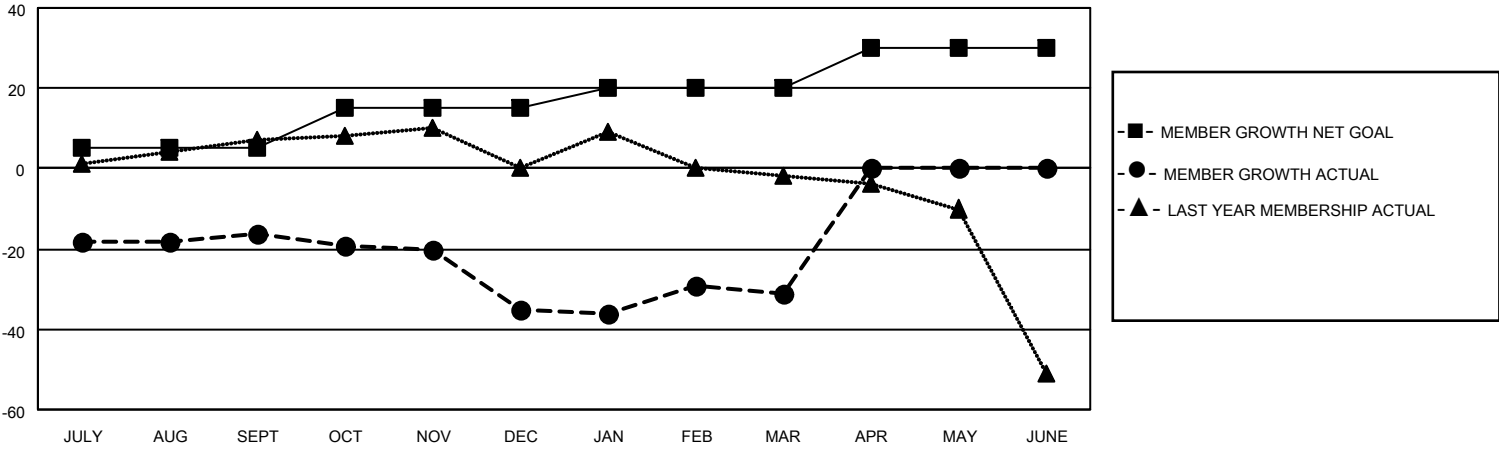
Clubs			
RESULTS FOR 2022-2023			
QUARTER	NEW CLUB GOAL	NEW CLUBS	DROPPED CLUBS
JULY/AUG/SEPT	1	0	2
OCT/NOV/DEC	0	0	0
JAN/FEB/MAR	1	0	0
APR/MAY/JUNE	0	0	0

Members			
RESULTS FOR 2022-2023			
QUARTER	MEMBER GROWTH NET GOAL	MEMBER GROWTH ACTUAL	DROPPED MEMBERS ACTUAL (including transfers)
JULY/AUG/SEPT	5	15	23
OCT/NOV/DEC	10	3	21
JAN/FEB/MAR	5	13	8
APR/MAY/JUNE	10	0	0

**GOALS AND ACTUAL NEW CLUBS CUMULATIVE**



**GOALS AND ACTUAL MEMBERS CUMULATIVE**



<p><b>DROPPED CLUBS: 2</b></p>	<p>13 CLUBS OF 25 ADDED 1 OR MORE NEW MEMBERS</p>	<p style="text-align: center;"><u>GENDER DISTRIBUTION</u></p> <p>MALE 318 (63.86%)</p> <p>FEMALE 180 (36.14%)</p> <p>NON BINARY 0 (0.00%)</p> <p>PREFER NOT TO ANSWER 0 (0.00%)</p>
<p><u>DROPPED MEMBERS</u></p> <p>DECEASED 6</p> <p>CLUB CANCELLED 9</p> <p>OTHER 37</p> <hr/> <p>TOTAL 52</p>	<p style="text-align: center;"><a href="#">CLICK HERE FOR CUMULATIVE MEMBERSHIP DATA</a></p>	<p>TOTAL FAMILY UNIT MEMBERS 101</p> <p>FAMILY MEMBERS PAYING HALF DUES 53</p>